

Regional Training on Understanding better microplastics and identifying how to address the issue

Assessing the impact of this regional WES training





WES IMPACT ASSESSMENT METHODOLOGY



- Approval of Activities' ToRs (Impacts and Indicators)
- The selection and assessment process of candidates based on certain criteria to make sure that the right calibers are in place.
- Dynamic participatory activities involving quizzes, exercises etc.
- Evaluation *in situ* (e) questionnaires
- Follow-up and getting feedback (e-survey, interviews, capitalization questionnaires completed by FPs)





WHEN COMPLETING THE EVALUATION

Consider the following:

- Did the webinars meet your expectations?
- Are you now prepared to implement your commitments?
- Do you need to update your commitment based on the knowledge and experience you gained?





**Water and
Environment Support**
in the ENI Southern Neighbourhood region

- Please go to the link: <https://forms.gle/MaxWS2b5yj4qgb5ZA>
- Veuillez visiter le lien suivant: <https://forms.gle/MaxWS2b5yj4qgb5ZA>
- 10 min



Regional Training on Understanding better microplastics and identifying how to address the issue

Wrap up 3 training Modules:
Key take-away messages

Marta Junquera, WES Project Manager, MedWaves

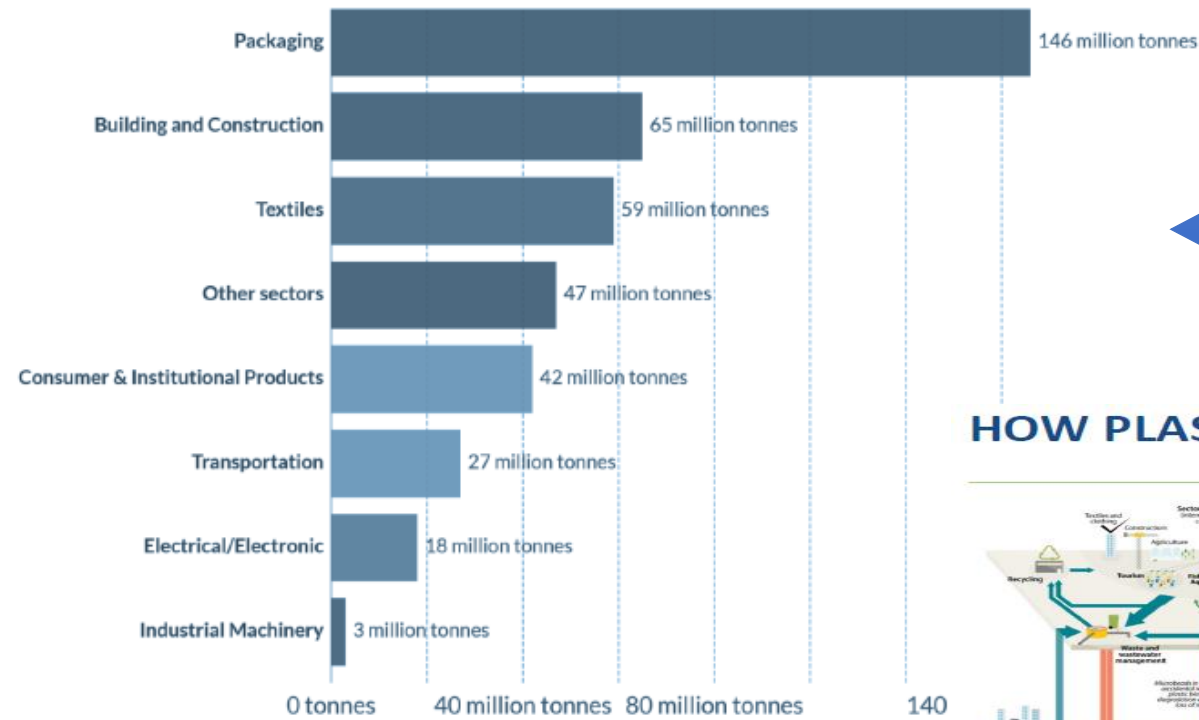


Wrap up 3 training Modules

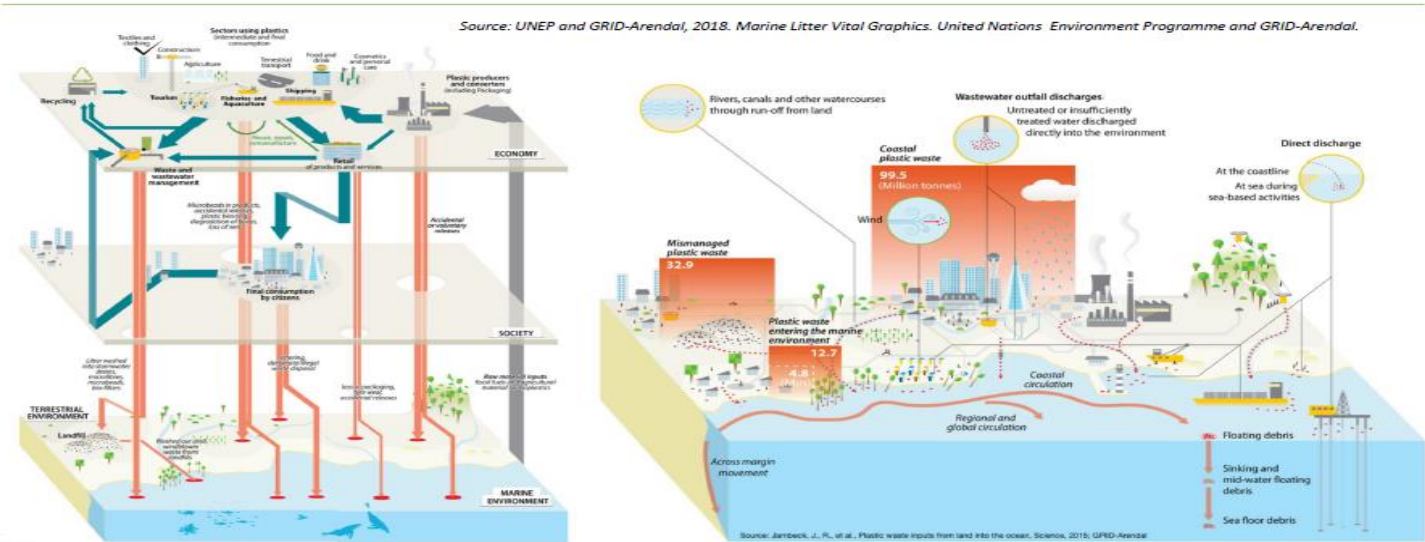
GLOBAL PLASTIC PRODUCTION BY INDUSTRIAL SECTOR, 2015



Water and Environment Support
in the ENI Southern Neighbourhood region



HOW PLASTIC ENDS UP IN THE ENVIRONMENT



Wrap up 3 training Modules:

Webinar 2



Primary microplastics (e.g. pellets 1-5mm or plastic microbeads used in cosmetics such as face scrubs).

Primary microplastics
manufactured for the purpose of being added to (or used in the production of) other products

Webinar 3



Secondary microplastics,
or fragments of
macroplastics broken
down over time

Secondary microplastics
created by the
fragmentation and
degradation of
macroplastics



**Water and
Environment Support**
in the ENI Southern Neighbourhood region



Wrap up 3 training Modules

GLOBAL



BASEL CONVENTION

REG



- 2nd UfM Ministerial Meeting on Environment and Climate Action
- The UfM's 2030 GreenerMed Agenda



- COP22 (December 2021, Antalya)
- Programme of Work (PoW) 2021-2022
- Regional Guidelines on measures to phase out Single-Use Plastic items
- Upgraded Regional Plan for Marine Litter Management in the Mediterranean



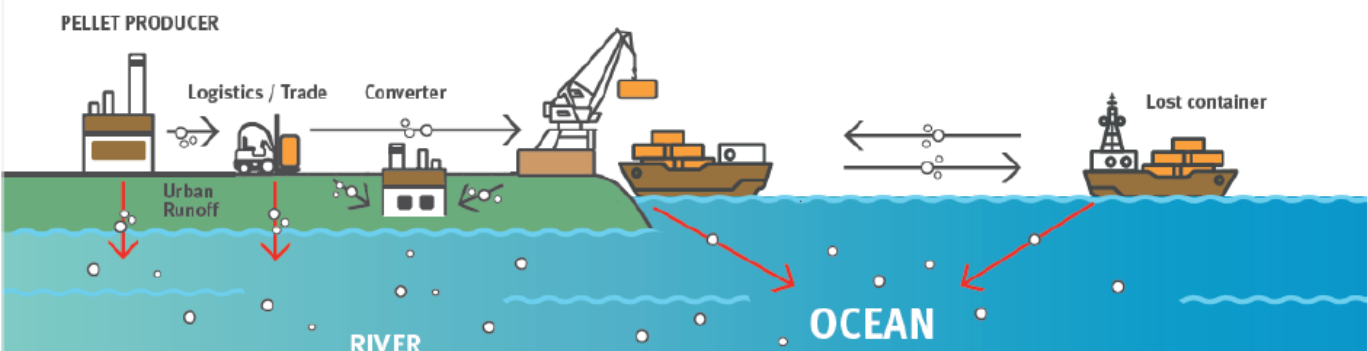
Water and Environment Support
in the ENI Southern Neighbourhood region

EU LEVEL



A CHRONIC AND STRUCTURAL POLLUTION

All actors of the value-chain have a role to play



What can be done?
@political level
@ individual level
As organisations

This Project is funded
by the European Union



Wrap up 3 training Modules

PREVENTION



Webinar 3



Water and Environment Support
in the ENI Southern Neighbourhood region

EU Textiles Strategy

An illustration showing a water tap with a single drop, a cloud labeled "CO2" with an arrow pointing down to a cracked, dry patch of land.

It is one of the **top three pressures on water and land use**, and the **top five** in terms of **raw material use and greenhouse gas emissions**.

How do Tyres Generate Microplastics?

1.

Tyre wear during use produces micro-particles

A dark green silhouette of a car.

2.

These combine with particles from asphalt, clutch wear, brake wear, and road particles to create road dust

A pile of multi-colored dots representing dust particles.

3.

These particles become airborne and are resuspended

A cloud of multi-colored dots representing airborne particles.

4.

They then collect in verges and in stormwater run off

A small stream of water with multi-colored dots representing particles being carried away.



Closure

Anis Ismail, WES Environmental Expert



Group Photo / *Photo de groupe*



**Water and
Environment Support**
in the ENI Southern Neighbourhood region

