



1st Steering Committee Meeting Athens, September 26th, 2019

Session: **Getting acquainted with the project**

Mr Stavros Damianidis, Project Director



WES Identity



**Water and
Environment Support**
in the ENI Southern Neighbourhood region

Facts & Figures	
Partner Countries:	Algeria, Egypt, Israel, Jordan, Lebanon, Morocco, Libya, Palestine* and Tunisia
Project value:	7.917.200 Euros
Duration:	May 2019 – May 2023 (48 months)
Project team:	Team Leader: Professor Michael Scoullos, scoullos@wes-med.eu Water Expert: Ms Suzan Taha, taha@wes-med.eu Environment Expert: Mr Anis Ismail, a.ismail@wes-med.eu Communication & Networking Expert: Ms Pam van de Bunt, vandebunt@wes-med.eu

*This designation is not to be construed as recognition of the State of Palestine and is without prejudice to the individual positions of the Member States on this issue.



WES Identity



Water and Environment Support
in the ENI Southern Neighbourhood region

Our Consortium



LDK Consultants Global EEIG (Leader)



Mediterranean Information Office for Environment, Culture and Sustainable Development (MIO-ECSDE)



Arab Network for Environment and Development (RAED)



Association of Cities and Regions for Sustainable Resource Management (ACR+)



CIHEAM – Mediterranean Agronomic Institute of Bari (CIHEAM Bari)



Gopa Infra GmbH



Ramboll Denmark A/S



Royal HaskoningDHV



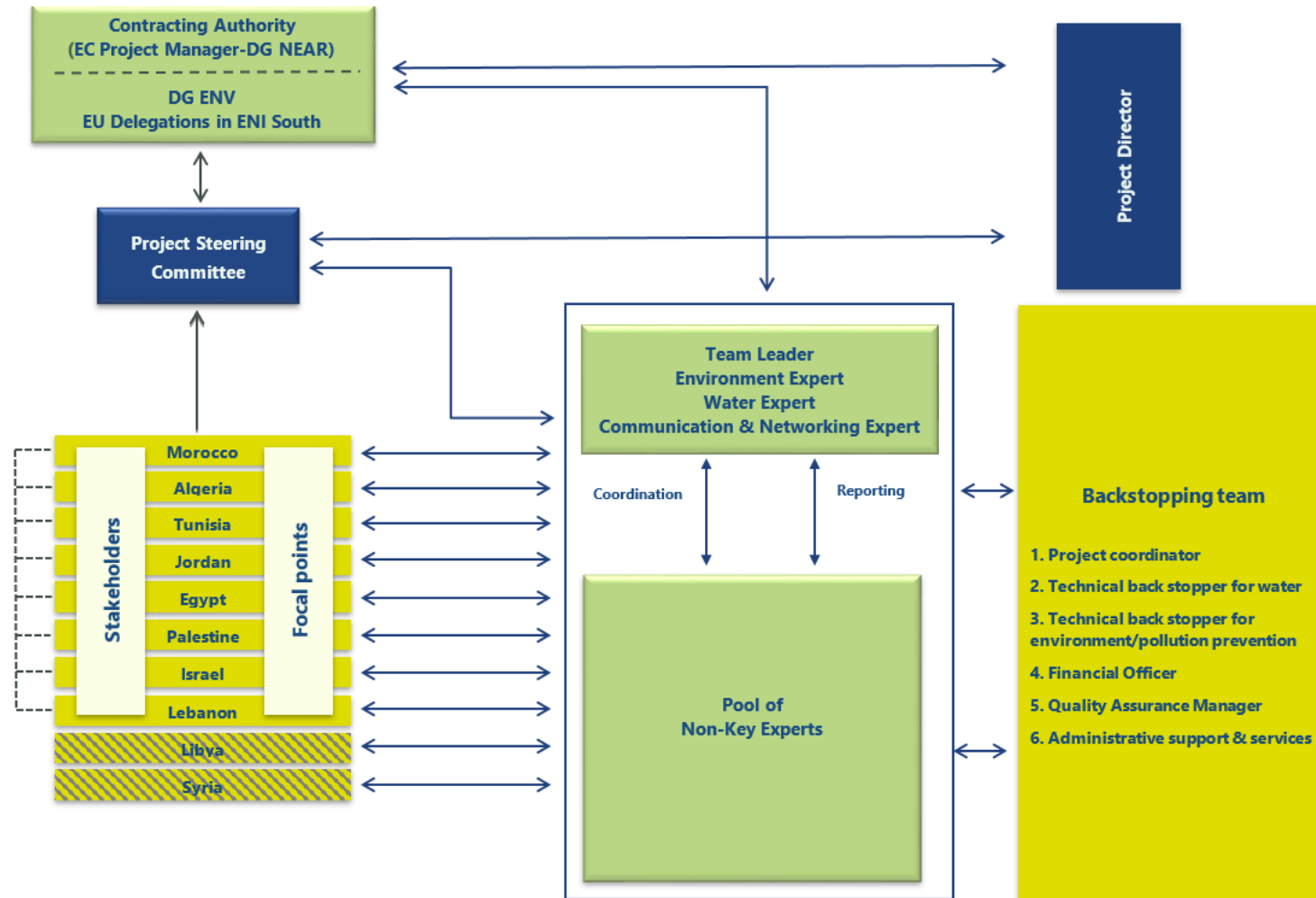
Regional Activity Centre for Sustainable Consumption and Production (ARC-SCP/RAC) of UN Environment/Mediterranean Action Plan



Steering the Project



Water and Environment Support
in the ENI Southern Neighbourhood region



WES in a Snapshot



**Water and
Environment Support**
in the ENI Southern Neighbourhood region

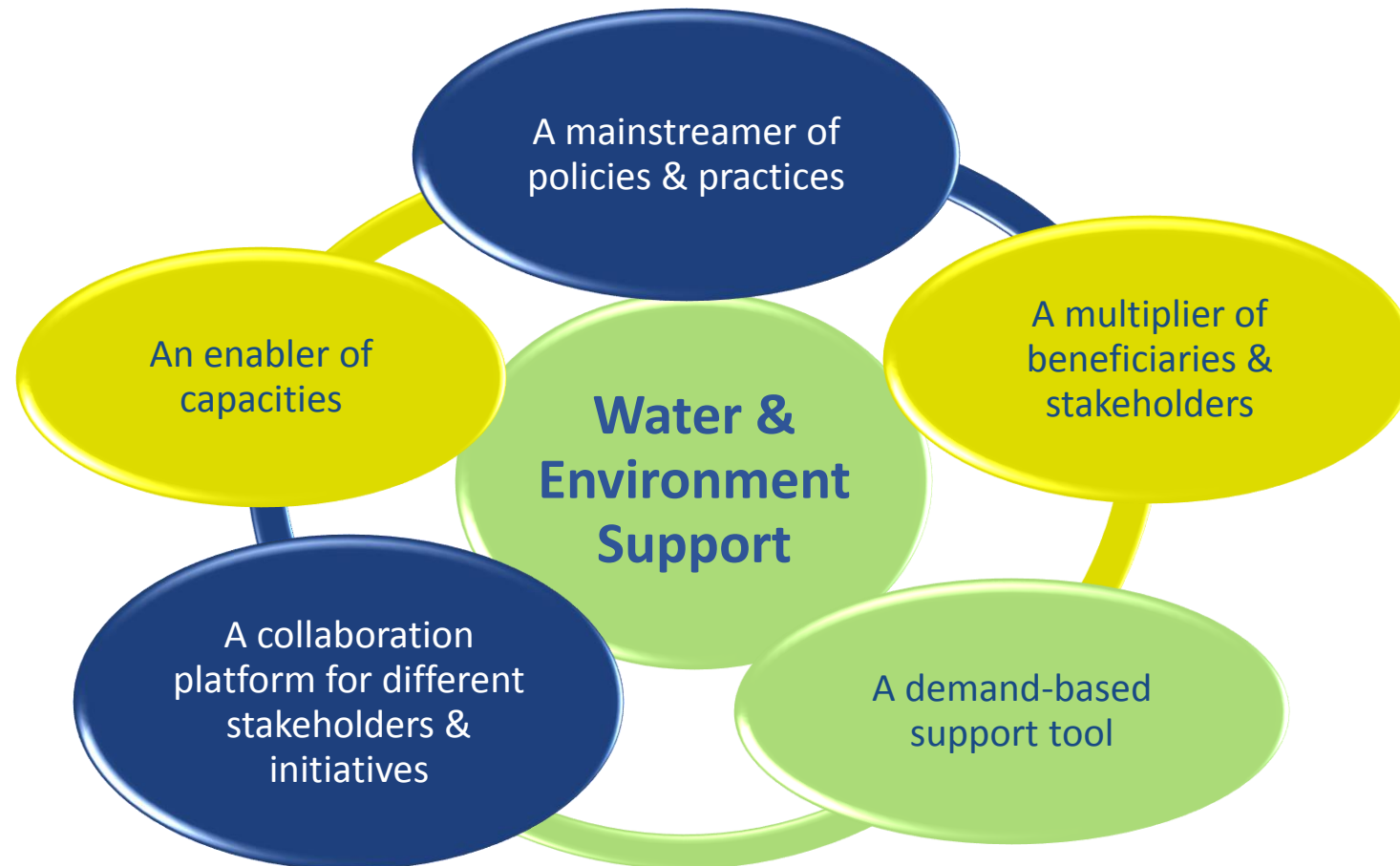
WES capitalises on previous successful EU funded regional projects (Horizon 2020 CB/MEP; SWIM SM; SWIM-Horizon 2020 SM) and strives for creating the enabling environment and increasing the capacities of stakeholders in the Partner Countries (PCs).



WES in a Snapshot



Water and Environment Support
in the ENI Southern Neighbourhood region



Inception Phase Activities



**Water and
Environment Support**
in the ENI Southern Neighbourhood region

- **Team Mobilisation- Kick Off Meeting**
- **Organisational and Managerial Actions**
Start-up of project regional office & satellite offices, establish project management board, develop management handbook and a manual for the experts, define monitoring and evaluation tools, set-up quality assurance procedures, establish financial management arrangements, develop procedural documents and report templates
- **Mapping of Relevant Projects and Needs Assessment of PCs**
- **Consultation Rounds** with CA, EU Delegations in PCs, UfM Secretariat, UN Environment/MAP, EEA, SwitchMed II
- **Development of Communication and Visibility Action plan**
- **Development of the Impact Assessment methodology**





**Water and
Environment Support**
in the ENI Southern Neighbourhood region

Thank you for your attention

